

company brochure



**La Vallee House,
Upper Dargle Road,
Bray,
Co. Wicklow,
Ireland.**

p: 00 353 1 204 0005
e: info@metec.ie
w: www.metec.ie

Mechanical • Electrical • Energy



contact details

Metec Consulting Engineers

**La Vallee House,
Upper Dargle Road,
Bray,
Co. Wicklow,
Ireland.**

p: 00 353 1 204 0005

e: info@metec.ie

w: www.metec.ie



Mechanical • Electrical • Energy



introduction

Metec Consulting Engineers was formed in 2006 and we have earned a reputation for high quality designs and a low energy, environmentally conscious approach, providing designs that are simple, buildable, maintainable and energy efficient.

Working collaboratively with our Client base we have successfully developed and delivered a variety of innovative building engineering services solutions reducing both energy consumption and carbon footprint.

We have worked on a large number of mixed-use residential and commercial developments including Office Developments, Restaurants, Commercial Facilities, Schools, Pharmaceutical Projects, Residential Developments, Healthcare, Food Processing Plants and many more.

Our hands-on approach ensures that a director is closely involved with our client throughout the project to retain control of our quality standards and to ensure client satisfaction.

We are confident that any project undertaken will be carried out with the utmost attention it deserves providing you with a service that is second to none.

FIRM PHILOSOPHY

"We believe our services are understandable, useful,
and of the highest quality, presented in a timely manner"

Mechanical • Electrical • Energy

Greg Brett
Director & Mechanical Engineer



B Eng., Eng Tech., MIEI

Greg has 18 years of experience as a Consulting Engineer and a director of Metec Consulting Engineers since 2006.

contact details:

m: 00 353 87 123 7495

e: greg.brett@metec.ie

Bernard Denver
Director & Mechanical Engineer, Energy Consultant



MSc., BSc (Hons) Eng., Dip. Eng., C. Eng., MIEI

Bernard has 17 years of experience as a Consulting Engineer and a director of Metec Consulting Engineers since 2009.

contact details:

m: 00 353 87 918 8298

e: bernard.denver@metec.ie

Cyril Creaven
Director & Electrical Engineer



Eng. Tech., M.I.E.T.

Cyril has 24 years of experience as a Senior Project Engineer and a director of Metec Consulting Engineers since 2011.

contact details:

m: 00 353 86 172 4542

e: cyril.creaven@metec.ie

Liam Madden
Senior Mechanical Engineer



B Eng., Eng Tech., MIEI

Liam has over 17 years of experience as a Consulting Engineer. Liam's strengths include project design, supervision, co-ordination, budgeting, cost control and day-to-day project management.

contact details:

m: 00 353 86 600 5913

e: liam.madden@metec.ie

Cian Moynihan
Senior Electrical Engineer



B Eng., Eng Tech., MIEI

Cian has 15 years of experience as a Consulting Engineer with particular expertise in lighting design, protective services, IT installations and Audio Visual packages.

contact details:

m: 00 353 86 773 4494

e: cian.moynihan@metec.ie

Martin Kavanagh
Electrical Engineer



H Cert Eng., Fetec Advanced Cert Electrical

Martin has 8 years of experience within the industry with particular expertise in building automation.

contact details:

m: 00 353 87 767 1086

e: martin.kavanagh@metec.ie

Rob Evans
Mechanical Technician



Fetac and City & Guilds Certificates in AutoCAD

Rob has worked in the Building Services Industry since 2006 and has a range of experience in design and draughting on many projects including large offices, schools, mixed use developments, pharmaceutical plant, hotels and apartments.

contact details:

m: 00 353 86 858 8814

e: robin.evans@metec.ie

James Murphy
Electrical Technician



FETEC Certificate in Advanced 2D and 3D AutoCAD & City & Guilds in AutoCAD

James has over 11 years experience as an AutoCAD Technician on many commercial, educational, health care/pharmaceutical and hospitality/leisure projects.

contact details:

m: 00 353 86 348 0541

e: james.murphy@metec.ie

Stuart Doolin
Graduate Engineer



B Eng (Hons), Eng Tech.

Stuart has 4 years experience in the Building Services industry. He specialises in low energy design and renewable technologies. He is also experienced in dynamic thermal simulation modelling.

contact details:

m: 00 353 86 058 4368

e: stuart.doolin@metec.ie

Barry Dunne
Graduate Engineer



B Eng., Eng Tech.

Barry specialises in sustainable energy systems and renewable energy technologies. He is also experienced in dynamic thermal simulation modelling.

contact details:

m: 00 353 87 938 6729

e: barry.dunne@metec.ie

Sub-consultants

Kevin Mulvany	- Electrical Services Consultant
Kevin O'Higgins	- Mechanical Services Consultant
Paul O'Shea	- Health and Safety Consultant
	Ashview Consultants

Metec Consulting Engineers are a multi-discipline Building Services Engineering Consultancy

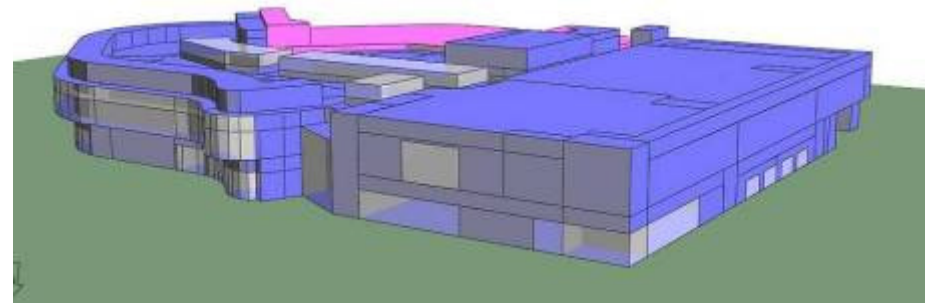
and offer a complete range of environmental services which include:

- Mechanical Engineering Services
- Electrical Engineering Services
- Energy/Renewable/Low Energy Design
- Water Conservation
- IT/Data/Comms including UPS
- Lighting – Internal and External
- Lightning Protection
- Security, Intruder and CCTV, Access Control
- Fire Alarm – Fire Detection & Protection
- Vertical Transportation – Lifts, Escalators
- BEMS Controls and Monitoring
- Building Information Modelling (BIM) – AutoCAD MEP (Mechanical, Electrical & Plumbing)



Metec Consulting Engineers provide a comprehensive range of professional services to our Clients, which include:

- Building Services and Systems Commissioning Management
- Feasibility and Desktop Studies
- Energy and Maintenance Audits
- Planned Preventative Maintenance Documentation
- Project Management
- Environmental Engineering
- Cost Advice
- Commercial [Non Domestic] BER's
- Right of Light Studies
- Shading Analysis – Particular Emphasis on Planning
- Planning and Compliance Advice





low energy/sustainability

Metec Consulting Engineers are committed to providing environmentally conscientious and sustainable design services to our Clients. Part of our culture is to use innovative low energy solutions to achieve minimal carbon footprints and reduce significantly primary energy consumptions.

We work closely with our Clients to develop their corporate sustainability policies. Design studies are initiated at the earliest possible opportunity to optimise the project's development for end user efficiency, with a target, in conjunction with planners and architects, of providing a positive environmental impact.

Metec Consulting Engineers invest in staff and technologies to enable our environmental goals to be achieved.

We are committed to Sustainable Design, working with the design team to create a building with reduced carbon emissions, whilst giving value to the funder and ongoing user of the project.

Mechanical

•

Electrical

•

Energy



low energy/sustainability

We have an in-house Energy Consultant Division, **Metec Energy**, and we have successfully integrated renewable energy technologies into developments as part of our environmental commitment and include the following technologies:

- Biomass boiler heating
- Combined Heat & Power [CHP]
- Voltage Optimisation
- Geothermal & Air to Water Heat Pumps
- Solar thermal heating
- Rainwater Harvesting

Understanding sustainable environmental design encompasses more than low energy initiatives, such as maximising natural ventilation and daylight, and we incorporate the guidelines in specifying sustainable materials and equipment as set out by the BRE.

We also strive to reduce water consumption by design and champion the incorporation of rain water harvesting systems to conserve one of our diminishing natural resources. Computer aided calculation packages include IES allowing detailed 3-D thermal analysis of buildings to be carried out on behalf of our Clients.



sectors

Metec Consulting Engineers expertise reaches out to all key markets. We have a sound understanding of the constraints and opportunities facing your marketplace. This enables our team of creative engineers to focus on innovative designs, utilising their diverse knowledge within your sector to devise the best possible solutions for your project in a cost effective way.

- **Commercial**
- **Retail**
- **Health Care**
- **Educational**
- **Pharmaceutical**
- **Residential and Private Development**
- **Mixed Use and Regeneration Developments**
- **Leisure & Sports**
- **Prisons & Defence**
- **Religious**

We provide specialist services for **Planned Preventative Maintenance, Peer Reviews, Expert Witness and Arbitration**

Mechanical • Electrical • Energy



Mechanical

•

Electrical

•

Energy



commercial

project **Covidien Office HQ Fitout**
20 on Hatch, International House,
Dublin 2, Ireland.

project manager CBRE

architect CBRE

status Completed June 2010

value €1,250,000.00

description

The project comprised of the Fitout for one of the world's largest healthcare companies, of the executive office in 20 On Hatch, Dublin 2. The fitout consisted of executive board rooms and conference rooms, offices, canteen, comms room and reception area.

The mechanical and electrical engineering services comprised of specialist lighting design for the Conference Rooms and Board Rooms, VRF Air Conditioning, Mechanical Ventilation, UPS Installation, Data and Communication, AV Installation, General Power, water services etc.

The project was installed within an 8 week period, completed on time and within budget.





commercial

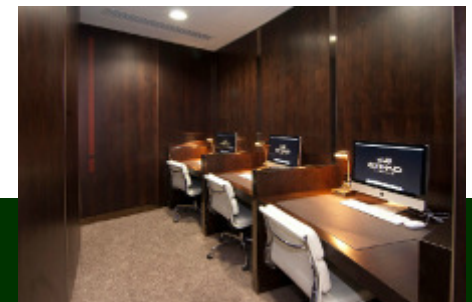
project	Etihad Lounge Terminal 2, Dublin Airport, Ireland.
project manager	Smith Madden Group
client	Glenbeigh Construction
status	Completed November 2010

description

Etihad Lounge is a 6 Star Plus VIP Lounge located between Terminal 1 and the New Terminal 2 Buildings in Dublin Airport.

The lounge comprises of a full kitchen, Banqueting Suite, Business Suite, Bar and Restaurant, Family Room, Administration Areas, Toilets and Showers, Prayer and Ablution Rooms.

The Mechanical Engineering Services include 4 Pipe Fan Coil Units, Mechanical Ventilation, Water Services and Soils and Waste, Kitchen Canopy and all associated pipework and ductwork. The Electrical Installation includes FIDS, VA/PA System, Cat 6 Cabling, Lighting, General Power, Emergency Lighting and Fire Alarm Systems. The project also included linking the Mechanical and Electrical Engineering Services into the Dublin Airport Authority [DAA] system and all associated co-ordination.





Telefonica

commercial

project **Wayra Fitout**
First Floor, O2 HQ, Sir John Rogersons Quay, Dublin 2, Ireland.

project manager Acuman

architect Synnott Design

client Telefonica

value €1,000,000.00

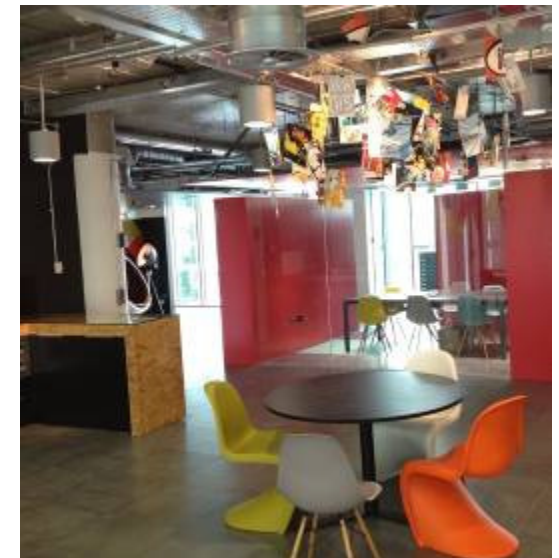
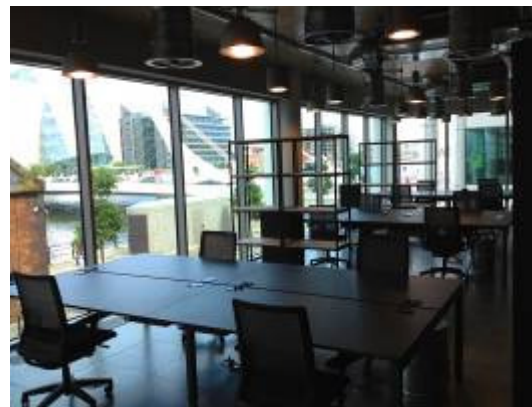
description

The Wayra Fitout in the O2/Telefonica HQ in Sir John Rogerson's Quay, Dublin 2 is a modern and contemporary office fitout that adopts industrial architecture with exposed engineering services.

The fitout comprised on the removal of the chilled beam installation for 2 pipe chilled water fan coil units, exposed secondary ductwork, modern contemporary lighting, Life Safety Systems, General Electrical Services, wifi, Audio Visual Installation, Water Services, Waste Installation etc.

The Wayra project commencement ceremony was attended by An Taoiseach Enda Kenny TD.

The fitout and demolition was completed within the 9 weeks programme and was within budget.



• Energy

project **Jazz Pharmaceuticals,**
Connaught House, 1 Burlington Road

project manager Structuretone

architect Henry J. Lyons & Partners

status Completed July 2012

value € 1,600,000.00

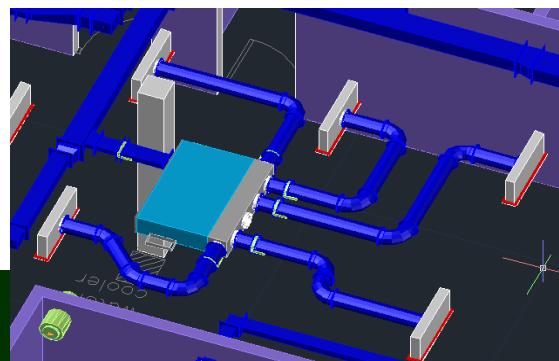
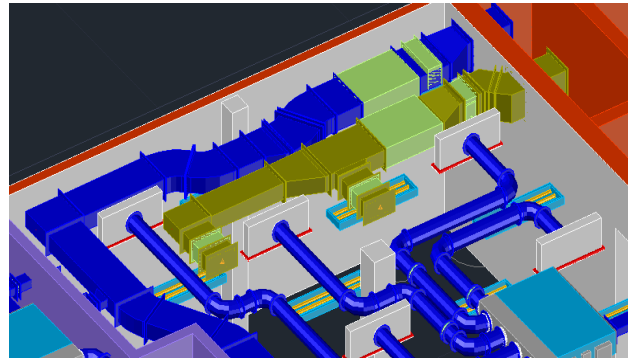
description

This corporate Fit-Out for Jazz Pharmaceuticals is located on the 4th Floor of Connaught House 1 Burlington Road and comprises of a high quality Mechanical & Electrical Engineering Services design.

The mechanical and electrical engineering services incorporates a fully air conditioned (air-side 4 pipe fan coil units) office Fit-out including comms room, hub room, coffee dock, canteen, extensive Audio Visual equipment, I.T. structured cabling infrastructure and uninterruptable power supply systems.

The project also includes an automated lighting control system, general services power, fire detection, BMS, energy monitoring & security systems.

The I.T. network includes external connections to two service providers for resilience in supply.



project **St. James' House,**
Adelaide Road,
Dublin 2, Ireland

project manager Jones Lang LaSalle

architect Henry J. Lyons.

status Completed 2012

Value €1,200,000.00

description

The project involved the complete re-furbishment of the existing five storey office block at St James House.

The Mechanical & Electrical Works included the fit-out of the office areas with VRF air conditioning units, Heat recovery ventilation systems, Water services, Soils & waste, Lighting & emergency lighting, Fire alarm, Vesda detection, General services power based upon workstation density of 1 per 8m², Automatic lighting control within core areas & disabled refuge alarm system.

The re-furbishment works for the entire building were completed in five months within budget and the success of the project was in part due to the good working relationship between design team & contractors.



Mechanical

Electrical

Energy

project **Northern Trust Limerick**

Hamilton House 2,
Limerick, Ireland.

project manager Jones Lang LaSalle

architect Elliott Maguire & Partners

status Completed March 2012

value €1,300,000.00

description

The project comprised of a high quality office Fit-Out of the Mechanical & Electrical Engineering Services for the Ground Floor Office and Reception Area which was constructed within a nine week period.

The mechanical and electrical engineering services comprised of In Ceiling Heat Recovery Ventilation Systems, 3 Pipe Air-Conditioning Systems, Heating Services, Mains & Cold Water Services, Central Hot Water Services, Soils & Waste Services, ESB supply upgrade, Replacement of the existing Back-up Generator set, Artificial Lighting complete with automated Lighting Control System, General Services Power, IT Structured Cabling Infrastructure, Audio Visuals Aids, Fire Detection System, Intruder Alarm, Door Access Control, Closed Circuit Television System and Building Management Controller.


Mechanical

•

Electrical

•

Energy



commercial

project	Travelers Office Fitout Blocks 1, 8 & 9, Harcourt Centre/Europa House, Dublin 2, Ireland.
project manager	CBRE
architect	CBRE
value	€805,000.00
status	Various Completions from Feb 2010 to May 2012



description

Metec Consulting Engineers have been appointed for four separate fitouts of the Travelers Insurance Group in the Harcourt Centre in Dublin 2 Ireland.

Heat Recovery Mechanical Ventilation and High Efficiency VRF Air Conditioning Installations were installed in the total of 4 office plate fitouts totally in circa 35,000 square foot.

All fitouts were installed and completed within programme and within budget and the continuity of the design team was a constant due to the success of each fitout.



Mechanical

Electrical

Energy



commercial

project **Standard Life Office
Refurbishment**
90 – 91 St. Stephens Green,
Dublin 2, Ireland.

project manager Jones Lang LaSalle

architect Henry J Lyons Architects

status Completed Feb 2012

value €1,400,000.00

description

Metec Consulting Engineers were the Mechanical and Electrical Consulting Engineers for the major renovation and upgrade to 90 – 91 St. Stephens Green, Standard Life's Irish Head Quarters.

The project was carried out on a phased floor by floor basis with minimum loss of business continuity included a new sub-station, mechanical ventilation, Air Conditioning, New Condensing Gas Fired Boiler, Modifications to the BMS, Lighting, Fire Alarm, Comms Room and General Power and Data Services.



Mechanical

•

Electrical

•

Energy



commercial

project **Aol Office Fitout** 6th to 11th Floors,
The Brunel Building, Heuston South
Quarter, Dublin 8, Ireland.

project manager IWSL

architect RKD Architects

status Completed Dec 2010

value €3,500,000.00

description

The project comprised of the Mechanical and Electrical Engineering Services fitout for Aol. Aol are one of the world's largest Global Internet Services and Media Companies. The building is spread over the top 5 floors in one of Dublins most iconic buildings.

The mechanical and electrical engineering services comprised of specialist lighting design for the Conference Rooms and Board Rooms, the latest PIR control energy efficient 4 Pipe fan coil unit Air Conditioning system, Mechanical Ventilation, UPS Installation, Data and Communication, AV Installation, General Power, water services etc.

In order to meet the short 9 week programme, Metec carried out the Design with an innovative approach of Co-ordinated M&E Single drawing Design procedure. This approach provide the fit-out contractors with a project that was co-ordinated prior to starting on site.



Mechanical

Electrical

Energy

project **Finglas Credit Union**
Finglas,
Dublin 11,
Ireland.

project manager Weir & Conway

architect John Fleming Architects

status Completed February 2012



description

The project constructed in 3 phases comprised of a new 500m² extension of the existing Credit Union and full refurbishment of the existing 420m² building totalling 920m² for the building.

The building includes large banking hall, large multi-purpose meeting hall, Conference/meeting rooms, loans waiting room, offices, safe rooms, canteen facilities and external parking areas.

The services provided included security, access control, IT, AV, general electrical services, Lift, soils and wastes, Water Services, Air-Conditioning throughout, ventilation and protective services.



Mechanical

•

Electrical

•

Energy



commercial

project **Alkermes Office Fitout**

Connaught House,
Dublin 2, Ireland.

project manager Jones Lang La Salle

architect Henry J Lyons Architects

status Completed Feb 2012

value €1,500,000.00

description

This prestigious high end office fitout for Alkermes, formerly Elán, in Connaught House, Dublin 2 consisted of new 4 Pipe Fan Coil Units complete with primary and secondary ductwork, high efficiency lighting, new power, data, Fire Alarm.

This fitout comprised of Board Room, Meeting Rooms, Cellular Office, Comms Room and Open Plan Office Space.

The project was completed in time and on budget with a nine week construction programme.



Mechanical

•

Electrical

•

Energy

project **Paddy Power,**
59 Moore Street,
Dublin 1, Ireland.

project manager Lafferty

architect KMD Architects

client Chartered Land

status Completed Jan 2011

description

Metec Consulting Engineers were the Engineering Services Consultants for the Paddy Power Fitout in 59 Moore Street.

The engineering services comprises of Air Conditioning, Heat Recovery Ventilation (the first in any of the Paddy Power Retail Units), Water Services, Soils and Waste, LED Lighting, General Lighting, Security Systems, Data and Communications, General Electrical Power.

The fitout programme was an intensive 3 weeks. Detailed co-ordination was therefore an essential ingredient. The project was handed over on time, on programme and within budget.



Mechanical

•

Electrical

•

Energy

project **Primark Zaandam**

Zaandam,
The Netherlands.

project manager NDS

architect Jack Coughlan Associates

quantity surveyor Bruce Shaw

status Completed Dec 2011

description

The project comprised of the Mechanical and Electrical Engineering Services and Sprinkler fitout of Primark's 60,000 square foot Zaandam Store in The Netherlands.

The mechanical and electrical engineering services comprised of Heat Recovery Mechanical Ventilation to the Retail and Back of House areas, District Heating and Cooling, Variable Speed Pumps, Lighting, Specialist Lighting to Retail and Display Areas, Life Safety Systems, Security, BMS, General Power Distribution etc. Reareareass

In order to meet the short 12 week programme, Metec worked very closely with the client, design team and various contractors. The Store opened on time as planned.



Mechanical

•

Electrical

•

Energy



pharmaceutical

project **Alltech Bioscience Centre**
Dunboyne,
Co. Meath,
Ireland.

project manager Fitz.Gerald & Associates

architect Fitz.Gerald & Associates

status Under construction

value €4,000,000.00

description

This project is currently on site and comprises of modifications to the existing building and a new extension to Alltech's European Headquarters and Bioscience Center in Dunboyne County Meath which supports 42 countries and 26 different languages.

The mechanical and electrical engineering services comprises of specialist lighting design for the Conference Rooms and Board Rooms, the latest PIR control energy efficient 4 Pipe fan coil unit air conditioning system, mechanical ventilation, UPS installation, lift installation, specialist gas installations, data and communication, AV installation, water services (including well water and rainwater usage), general power etc.

The project was designed with a high level of M&E co-ordination.

The project is due for completion in July 2013.



Mechanical

•

Electrical

•

Energy

project	Rothapharm Research Mulhaddart, Co. Dublin, Ireland.
project manager	James Collins
client	Rottapharm
status	Various Completions from Feb 2010 to May 2012

description

The project comprised New Production, Filling and Packaging Areas with the existing plant. The pharmaceutical manufacturing and research plant covers some, 10,000 square metre on a twenty acre site at Damastown Industrial Estate, Mulhuddart, Dublin:

- Protective Services
- Lighting
- General Services
- Structured Cabling
- Fire Alarm
- Access Control
- AV Systems



project **The Copan,**
304 Rathmines Road Lower,
Rathmines,
Dublin 6, Ireland.

client Zenith Bars

architect Deluxe Group

status Completed Dec 2010

value €3,000,000.00

description

The project comprised of the complete renovation and extension to the existing Madisons Bar, Rathmines. All existing services were removed and a complete new Mechanical and Electrical Engineering Services Installation was provided.

The project included a new Large Back Bar, Large Front Bar, External Smoking Area, Cocktail Bar, Kitchen, Staff and Managers Areas etc. Energy Efficient LED Lighting was used throughout along with Heat Recovery Mechanical Ventilation.



Mechanical

Electrical

Energy

project **The Grand Social**
35 Lower Liffey Street,
Dublin 1, Ireland.

client The Grand Social

project manager IWSL

status Completed Sept 2010

value €650,000.00

description

The project comprised of the renovation of the former Pravda Public Bar off the Ha' Penny Bridge Dublin 1.

The project included a removal of the atrium bar and provision of a purpose built unique venue that combines Live Music, Comedy, Culture, DJs, Art, and Performance.

The engineering services includes modifications and upgrade to the mechanical ventilation, heating, water services, soils and waste, fire alarm, lighting, life safety, electrical power, sound systems etc.



project **Glenaulin Nursing Home**
Chapelizod,
Co. Dublin,
Ireland.

architect Peter De Loughry & Associates

status Phase 1 completed May 2011
Phase 2 completed Oct 2011
Phase 2 completed March 2012

value €2,000,000.00

description

The project comprised of a phased 29 Bed extension to the existing 57 bed nursing Home, while occupied and kept live throughout works.

Our services included the design, tendering and construction management of the Mechanical and Electrical services for the project to allow for a phased completion and handover for the project.

The mechanical installation included replacing the existing boilers housed in two locations to a new centrally located Gas fired system to cater for the entire nursing home, all carried out in phases. The existing incoming ESB supply and generator was also upgraded to allow for the extension. The extension consisted of 29 additional beds, Day rooms, reception, visitors' rooms, hairdressers, assisted toilets, new Chapel, smoking rooms, kitchen and Laundry. [site.](#)



Mechanical

•

Electrical

•

Energy

project **Ashbury Nursing Home**
Extension /Renovation,
Deansgrange,
Co. Dublin,
Ireland.

architect Coleman Quinn Architects.

status Phase I completed Jan 2012
Phase II due for completion 2013

value €2,000,000.00

description

The project is currently under construction with Phase I having been completed already of this well established and friendly Nursing Home which has been providing a comprehensive range of care services in South County Dublin since 1989.

The project consists of the full range of Mechanical and Electrical Engineering Services installations including heat recovery mechanical ventilation, air-source heat pump installation, UPS installation, lift installations, data and communication, lighting services, water services (including well water), general power, fire alarm installation etc. At all times during Phase I and Phase II, the Nursing Home has remained fully operational.

The project is due for completion in the third quarter of 2012.



Mechanical • Electrical • Energy

project **Focus Ireland,**
Mechanical & Electrical Services Upgrade,
Block 4, Georges Hill,
Co. Dublin , Ireland

architect Gerry Cahill Architects.

status Project Completed November 2010

value €600,000



description

The project consisted of the proposed upgrade of the existing Electrical Services installation to Block 4 of Georges Hill for Focus Ireland.

Block 4 in this project currently is made up of 14 No. Self catering living living units and circulation areas. 2 no. Units were remodelled from living units into a common multipurpose area made up of Kitchen, Dining, Living, Laundry & Reception. The remaining 12 No. units are to be upgraded/modernised.

Project 1 : Mechanical & Electrical Upgrade consisted of the construction of new sheltered accommodation, upgrade of common areas, new day/living areas, new reception & security areas.

Project 2 : Electrical Upgrade consisted of :

- CCTV
- Access Control
- New Fire Alarm System



Mechanical

•

Electrical

•

Energy



recreational

project **Showtime Cinemas**
Ennis Road Retail Park,
Limerick, Ireland.

architect Denis McCague Associates

quantity surveyor Thorne Sarsfield Ltd.

value €700,000.00 M&E

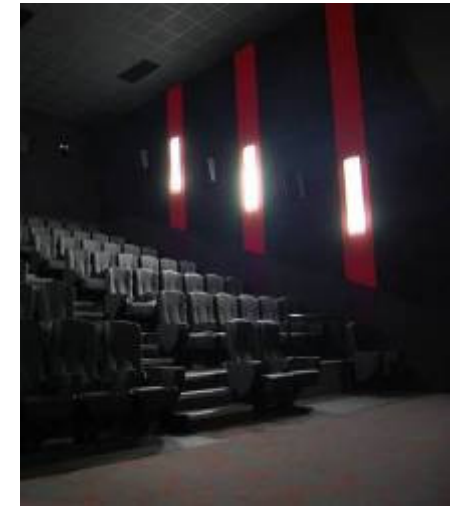
status Completed March 2012

description

The project comprised of a new 7-Screen Cinema Complex in Ennis Road Retail Park in Limerick which included a complete installation of the mechanical and electrical services. The existing building was merged from 3 No. separate vacant shell units to form a new cinema complex.

The mechanical and electrical engineering services comprised of 8 No. gas-fired air handling units providing tempered fresh air to the screens and foyer, water services and drainage systems serving toilet areas, specialist lighting and sound systems life safety systems, security systems, general power distribution etc.

In order to meet the tight programme, Metec worked very closely with the client, design team and mechanical and electrical contractors enabling the cinema to be opened on time.



Mechanical • Electrical • Energy

project: **Private Residence**
Kiltarnan,
Co. Dublin,
Ireland.

architects: SBA Architects

project value: €90,000.00 M&E

status: Completed 2010

description

The project comprised of the full Mechanical and Electrical Engineering Services installation for a private residence in Kiltarnan, in County Dublin.

The installation consisted of specialist lighting design, fire and intruder alarm installation, general services installation, central heating oil-fired condensing boilers, LPHW radiators, hot water generation via solar panels, soils & waste installation and cold water services installation etc.

The project was completed on time and within budget.

Floor area: circa 370m² (4,000ft²).



Mechanical

•

Electrical

•

Energy

project: **Private Residence**
Arklow,
Co. Wicklow,
Ireland.

architects: Seamus O'Hagan Architects

project value: €110,000.00 M&E

status: Completed 2010

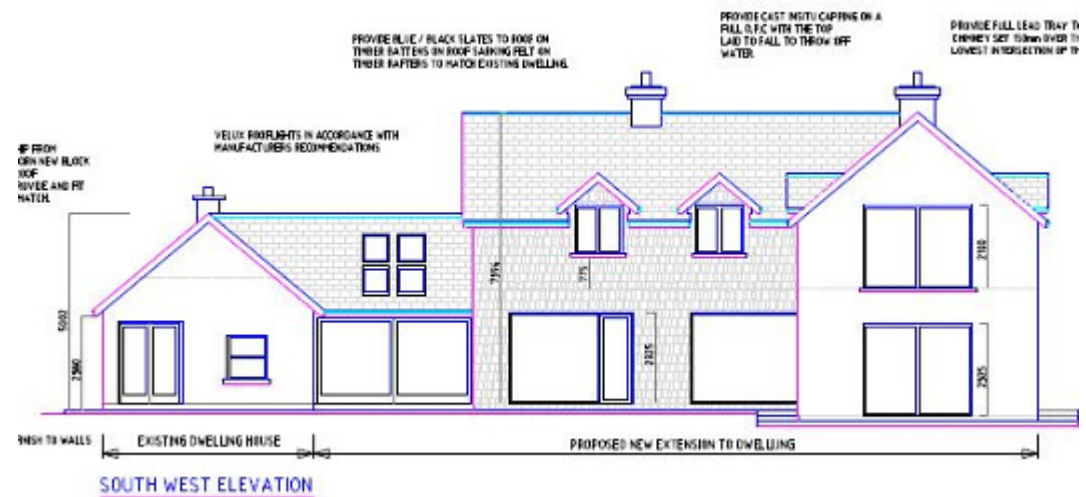
description

The project comprised of the full Mechanical and Electrical Engineering Services installation for a private residence in Arklow, in County Wicklow.

The installation consisted of specialist lighting design, home sound system, fire and intruder alarm installation, general services installation, central heating oil-fired condensing boilers, LPHW radiators, hot water generation via solar panels, soils & waste installation and cold water services installation etc.

The project was completed on time and within budget.

Floor area: circa 120m² (1,300ft²).



project: **Private Georgian-style Residence**
Monkstown,
Co. Dublin,
Ireland.

project manager: Freddy Millar Building Consultancy

project value: €90,000.00 M&E

status: Completed 2009

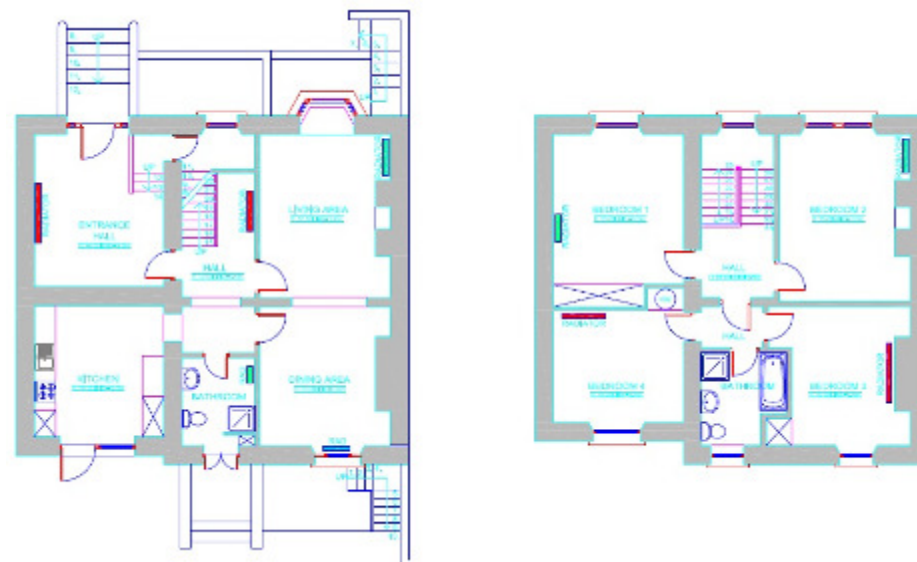
description

The project comprised of the full Mechanical and Electrical Engineering Services installation for a private Georgian-style residence in Monkstown, in County Dublin.

The installation consisted of specialist lighting design, fire and intruder alarm installation, general services installation, central heating oil-fired high efficiency condensing boilers, high-spec Georgian-style radiators and underfloor heating, hot water generation via solar panels, soils & waste installation and cold water services installation etc.

The project was completed on time and within budget.

Floor area: circa 285m² (3,000ft²).



project: **Private Residence**
Skerries,
Co. Dublin,
Ireland.

architect Niamh Butler Architects

project value: €270,000.00 M&E

status: Completed 2010

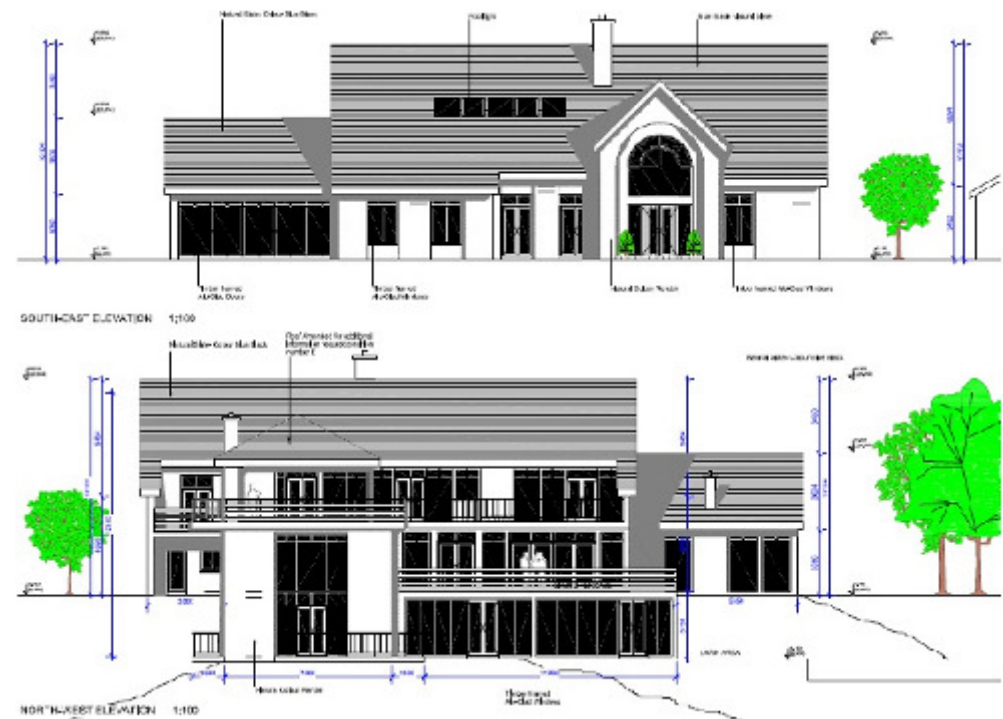
description

The project comprised of the full Mechanical and Electrical Engineering Services installation for a private residence in Skerries, in County Dublin.

The installation consisted of specialist dimming lighting design, fire alarm installation, AV system installation, general services installation, geothermal heat pump system via bore-holes, low temperature radiators, hot water generation via solar panels, soils & waste installation and water services installation etc.

The project was completed on time and within budget.

Floor area: circa 700m² (7,500ft²).



Mechanical

•

Electrical

•

Energy



religious

project **St. Marys Dominican Priory**
Tallaght,
Co. Dublin,
Ireland.

project manager John D. Skelly & Associates

architect Crean Salley Architects.

status Ongoing

value €3,000,000.00



description

The Priory project comprised of the upgrade of the electrical life systems including the emergency lighting and automatic fire alarm systems throughout the complex, and the replacement of the existing cold water storage tanks.

The electrical life safety systems were designed to facilitate the project works being carried out on a phased basis whilst the complex and priory accommodation remained in use.

In areas of architectural sensitivity wireless fire alarm equipment has been installed to obviate the requirement for extensive builder's works.



Mechanical

•

Electrical

•

Energy



religious

project **La Verna House,**
Franciscan Friary,
Gormanston,
Co. Meath, Ireland.

project manager Crean Salley Architects.

architect Crean Salley Architects.

status Completed 2012

value €1,000,000.00



description

The project comprised of the construction of a new chapel, kitchen and dinning room within the La Verna House for the Franciscan Community in Gormanston.

The Building Engineering Services Installation also included the alterations to the bedrooms withing the building and the provision of en-suite accomodation within the ground & first floor areas.

The Mechanical & Electrical Engineering Services Installation comprised of Heat Recovery Ventilation, Water Services, Drainage, Fire Alarm, General Services Power, Emergency Lighting and Specialist Lighting throughout.



Mechanical

Electrical

Energy



project **Wheatfield Prison,**
Smoke Extract Ventilation Project,
Clondalkin,
Dublin 22, Ireland.

main contractor Glenbeigh Construction

status Complete

value €300,000.00

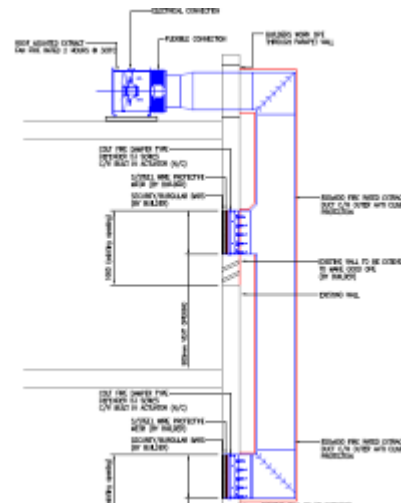
description

Metec Consulting Engineers designed the Smoke Extract Ventilation System in Wheatfield Prison.

The installation included smoke extract ventilation included Fire Louvers, actuators, ductwork, fans etc, passive intake air, upgrade to the fire alarm installation and all associated builders work.

The installation took place in a "live" prison environment with little disruption permitted to the day to day operations for prisoner and prison guards.

Careful co-ordination with the Irish Prison Service, staff, main contractor, sub contractors and design team was fundamental as large significant ops in external facades were necessary during the installation/construction stage.



Mechanical • Electrical • Energy

projects

Various School/Educational Projects.

Metec Consulting Engineers have been the Engineering Services Consultants for various Educational Projects. A list of our recent school projects are below. We have been appointed through normal design teams and through Summer School Project Works directly to the relevant schools.

projects



school	discipline	value	status
St Conleth's, Clyde Road Dublin 4	Mechanical & Electrical	€1,500,000.00	Major extension to existing school completed January 2010
Scoil Padraig, Clane, Co. Kildare	Mechanical	€150,000.00	Completed August 2009
Our Lady of Victories, Boys National School, Ballymun Road, Dublin 9	Mechanical & Electrical	€300,000.00	Completed August 2010 & 2011
Our Lady of Victories, Girls National School, Ballymun Road, Dublin 9	Electrical	€150,000.00	Completed August 2011
Scoil an tSeachtar Laoch, Ballymun Road, Dublin 9	Electrical	€110,000.00	Completed August 2011
Scoil Aodan Naofa, Carnew	Mechanical & Electrical	€200,000.00	Completed August 2010 & 2011
St Paul's, National School, North Brunswick Street, Dublin 7	Mechanical	€160,000.00	Completed August 2010
St Paul's, CBS, Secondary School, North Brunswick Street, Dublin 7	Mechanical	€170,000.00	Completed August 2011
Boosterstown National School, Booterstown, Co. Dublin	Mechanical	€100,000.00	Completed August 2011
Mount Anvil Primary School, Stillorgan	Mechanical & Electrical	-	Tender Stage
Holy Rosary, Dundrum	Mechanical	€20,000.00	Completed July 2011
Coolafancy National School, Tinahealy, Co. Wicklow	Mechanical & Electrical	€80,000.00	Completed August 2011

Mechanical • Electrical • Energy